

# Welcome to Exploring Art!

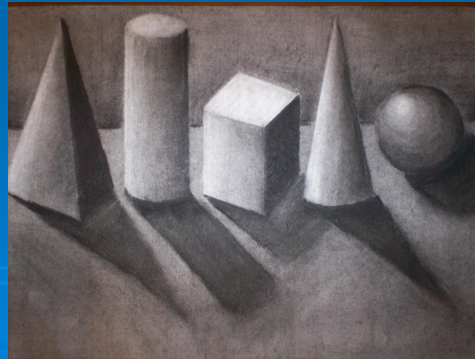


**Ms. Ostendorf**  
**Petaluma**  
**Junior High**



# COURSE DESCRIPTION

This course is designed to introduce students to various art mediums and techniques. Students will learn basic skills in drawing and painting while exploring materials such as graphite, colored pencil, ink, charcoal, pastel, watercolor, and acrylic paint.



# INSTRUCTIONAL UNITS:

Students will use a variety of media to learn the Elements of Art.

- Line
- Shape
- Form
- Texture
- Color
- Value
- Space



The class begins by learning basic fundamentals, then students build upon their prior knowledge to complete more detailed and complex work.

# THE LEARNING PROCESS

## DEMONSTRATIONS

- Demonstrations for every assignment

## GUIDED INSTRUCTION

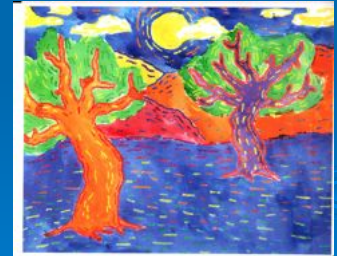
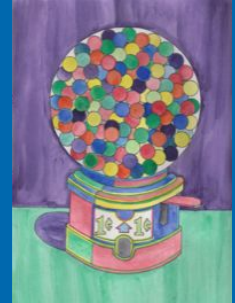
- Breaking things down into easy to follow steps

## VISUAL AIDS

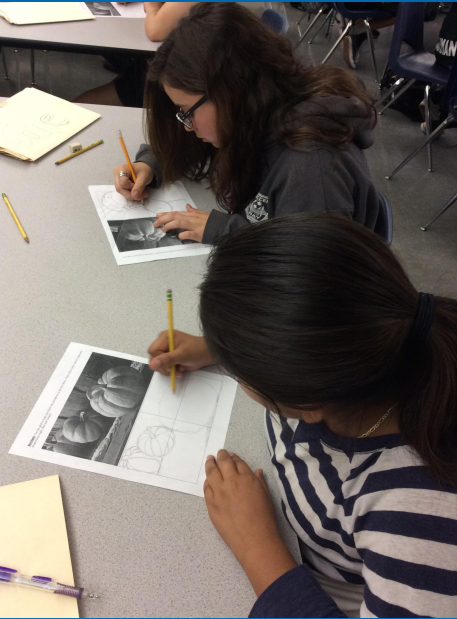
Artist, teacher, and student examples

## STEP CHARTS

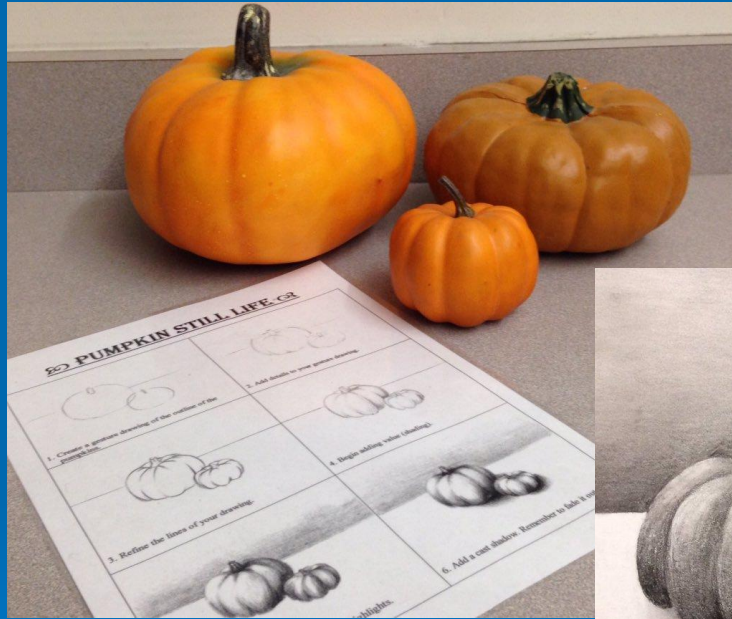
Help students to see where we are, and where we are going.



# STEP CHART EXAMPLES



Practice  
(worksheets  
& sketches)



Demonstrations,  
Step Charts, &  
Guided Instruction

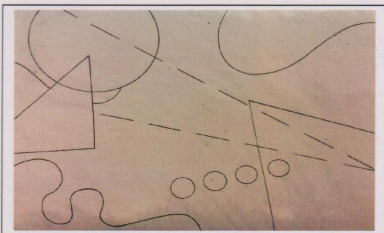


Independent Work

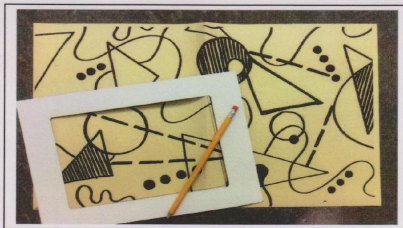
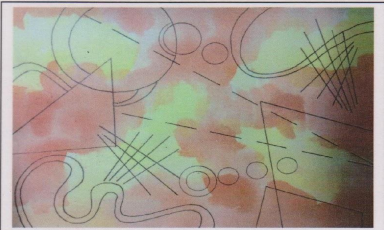
# Kandinsky Inspired Artwork



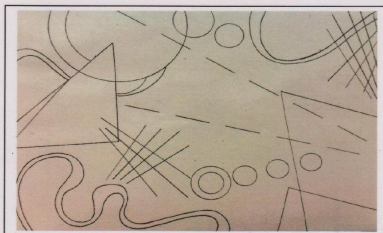
**STEP 1:** Follow the prompts to create a Kandinsky style composition. Fill the page.



**STEP 3:** Use a pencil to enlarge the composition on watercolor paper.



**STEP 2:** Use the view finder to find a good composition.



**STEP 4:** Add detail to your design. Refer to the Kandinsky handout for ideas.

**STEP 5:** Using the wet-on-wet watercolor technique, paint blotches of 2 analogous colors onto your paper.

## **ANALOGOUS COLORS:**

Analogous colors are colors next to each other on the color wheel. Your choices are:

- Red and orange
- Orange and yellow
- Yellow and green
- Green and blue
- Blue and violet
- Violet and red



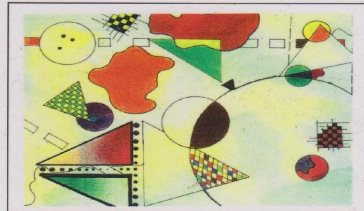
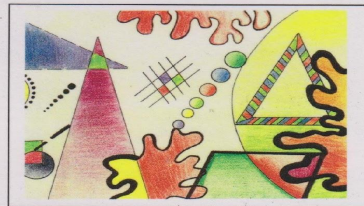
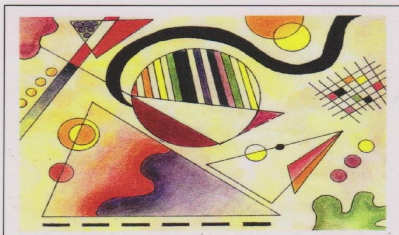
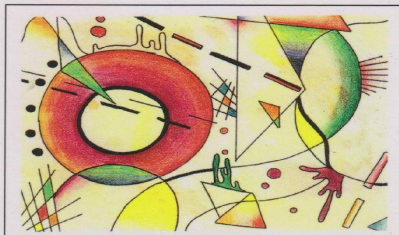
**STEP 6:** Outline your drawing with black marker using thin, medium, and thick lines.

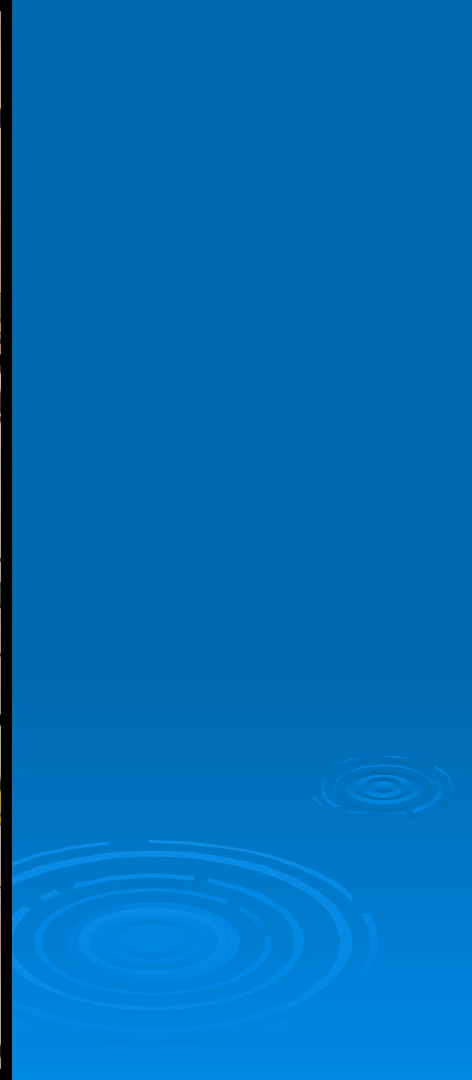
**STEP 7:** Color with colored pencil using 6 - 9 colors. Repeat your colors.

\* You should have at least 3 large colored areas.

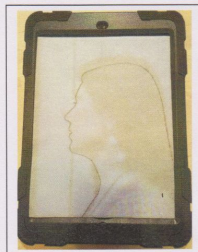
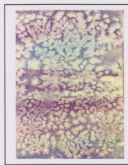
\* You should have at least 3 fades. (From dark to light, or from one color fading into another color.)

## **Student Examples**





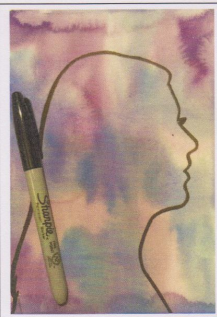
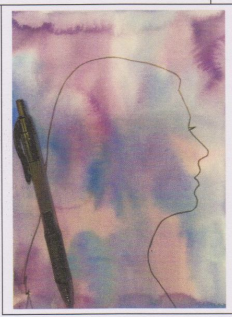
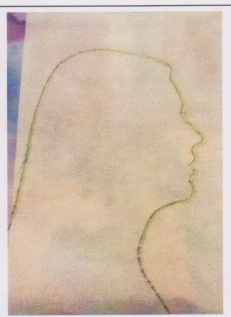
## Silhouette Painting



**STEP 1:** Use 2 analogous colors to create a background using a wet-on-wet watercolor technique.

**STEP 2:** Have someone take a picture of your profile on your iPad.

**STEP 3:** Trace your profile onto tracing paper.

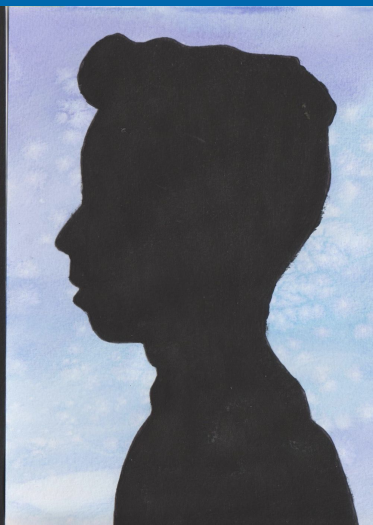
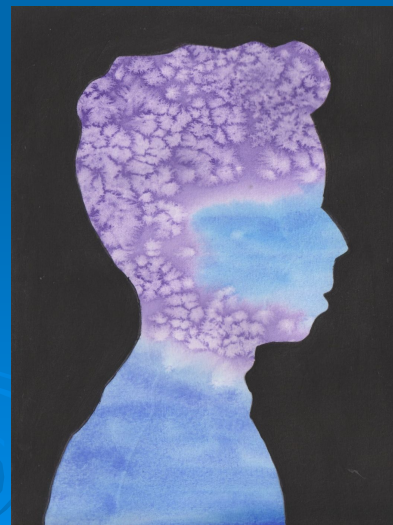
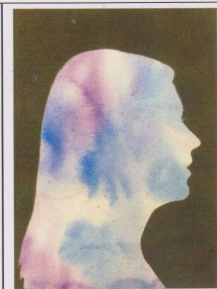
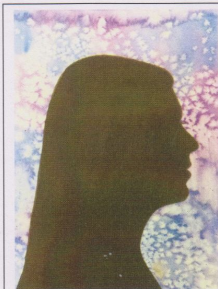


**STEP 4:** Flip your tracing paper over (pencil side down), and trace over your lines. (Press firmly.)

**STEP 5:** Use a fine point pen to trace over your pencil lines. (Draw the lash black for a black portrait, or outline it for a color portrait.)

**STEP 6:** Use a black marker to carefully draw a line on the inside or outside of your outline. (This will help you to get a precise profile.)

**STEP 7:** Use a small brush to paint around the black marker. Use smooth brush strokes to fill in the profile or the portrait.





## - Exploding Squares -



1. Pick out a 4 1/4" square piece of construction paper, place it in the middle of your 9 1/2" X 11" paper and trace around it.



2. Create shapes within shapes on all four sides of your square paper. The shapes must be attached to the edges of the square. Do not draw shapes on the corners of the paper. Fill the square as much as possible.



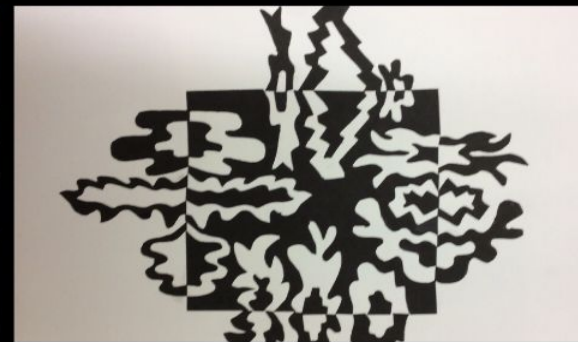
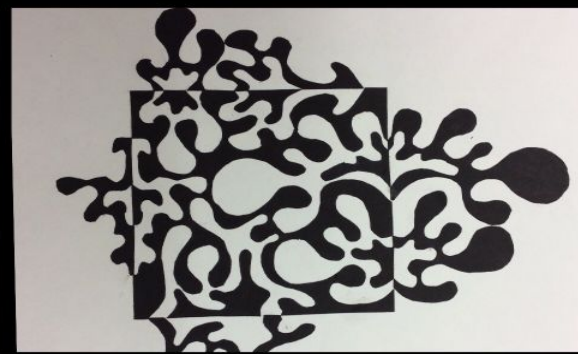
3. Carefully cut out all of your shapes.

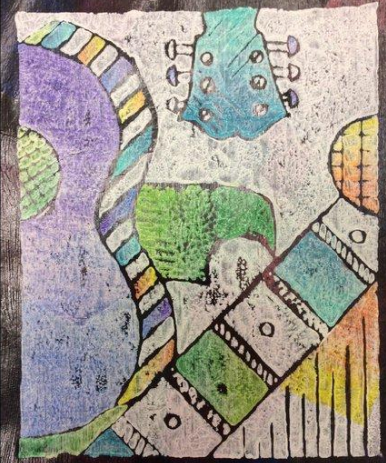
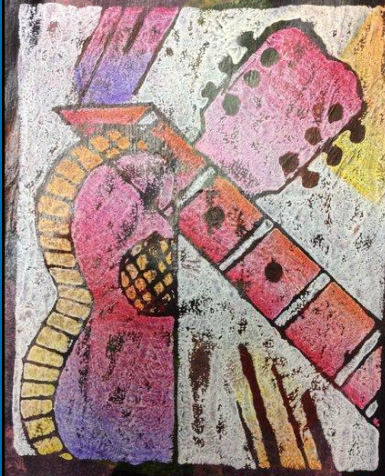
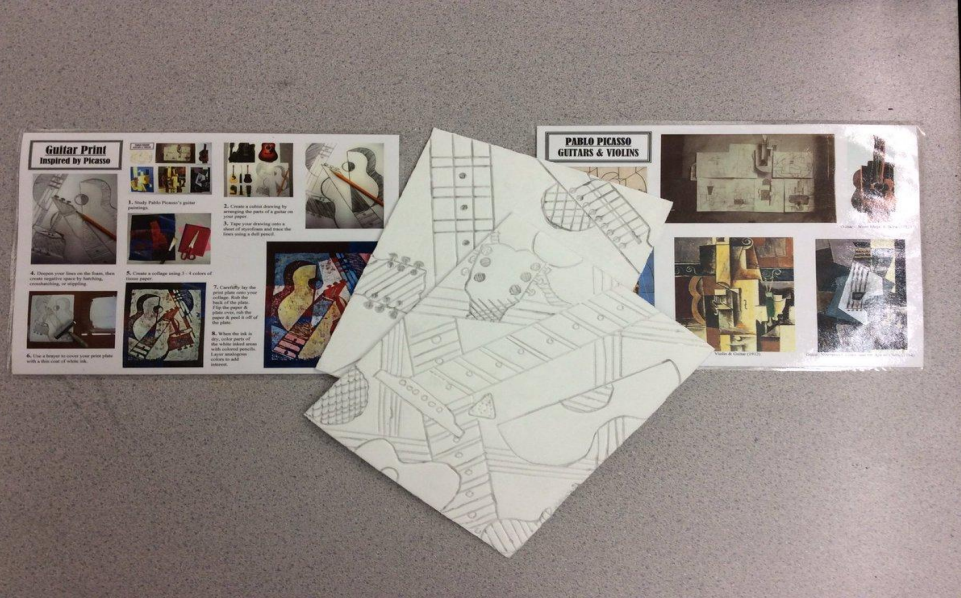
4. Glue down your box (pencil side down), so that it lines up with the traced outline on your construction paper. Put the glue on the pieces to be glued, not the background paper.

5. Flip out one of your shapes and align it with the edge of the original square. (Illustration A) Glue your shape in place.

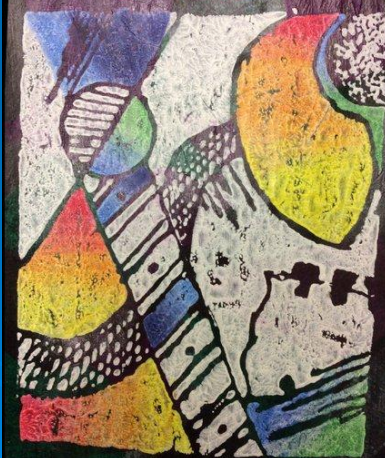


6. Take your smaller shape (Illustration B) and flip it back into the box. Glue your shape in place.  
\*Make sure that all of your shapes line up with the square outline.

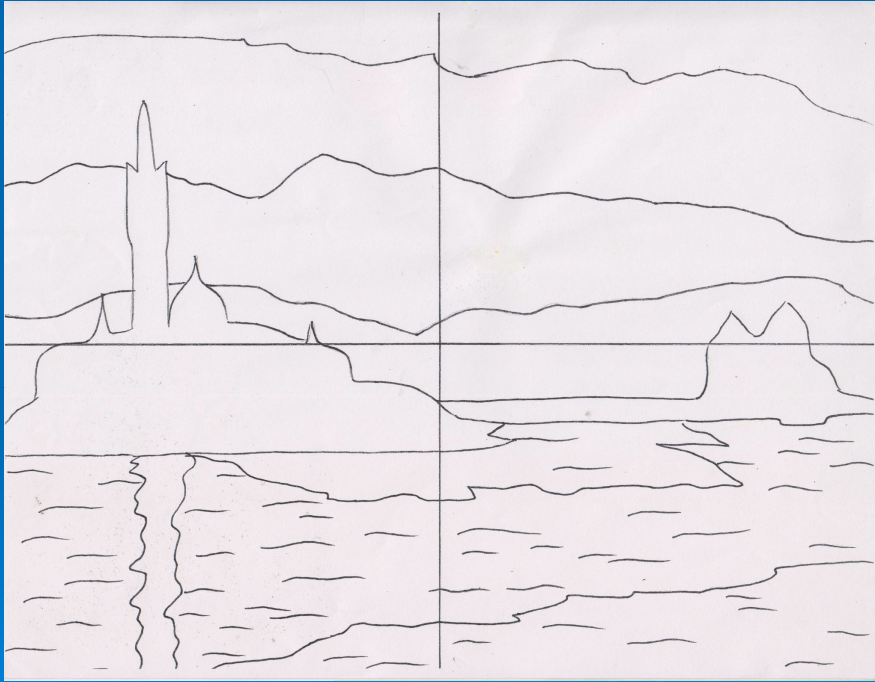




## CUBIST GUITAR PRINTS

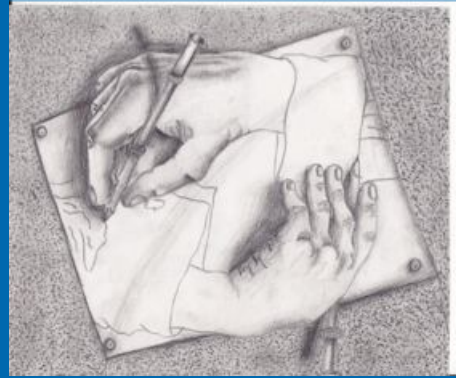


# GUIDED DRAWING & PAINTING



# Art is a learned ability.

- Whatever level a student is currently at, I want them to improve!
- You do not have to be a naturally gifted artist to do well.
- The more you learn and practice, the better you get!



# Things that require zero talent

- Being on time
- Being Prepared
- Work ethic/ Staying focused
- Effort (always trying your best)
- Willingness to learn & attitude
- Doing more than the minimum requirements
- Taking your time on your work - no scribbles!
- Don't fold or wrinkle your paper!



# GRADING

- PROJECTS

Quality over quantity!

I want students to be proud of their accomplishments.

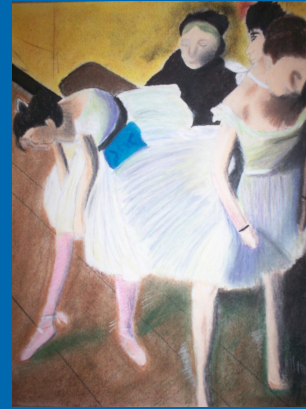
- WORKSHEETS

- Help students understand a topic or technique
- Builds confidence

- **Warm up assignments & Backup projects**

- **Class activities**

- **Class participation & Attendance**



# GRADING CRITERIA

## Criteria

- Did you follow directions?
- Did you meet all of the criteria?

## Craftsmanship

- Is your neatness and skill level above average, average, or below average?

## Involvement

- Did you put a lot of effort into your project?
- Did you work all period & every period?

## Originality & Creativity

- Did you think “outside of the box”?



# SELF EVALUATIONS

I want students to understand why they have earned their grade.

Self evaluations and class critiques help students to analyze and reflect upon their work.

- Title of Project
- Medium(s) used
- Historical and/or cultural connection  
(art movement, time period, and/or culture)
- Project specific questions
- Is your craftsmanship and skill level above average, average, or below average? WHY?
- What grade do you think you deserve on this project? WHY?

\*Refer to the grading rubric to assess your work.



# CRITIQUES



CLASS CRITIQUE



# The Aesthetic Scanning Process

Learning to talk about art using a framework.

1. Description
2. Analysis
3. Interpretation
4. Judgement

**- The Aesthetic Scanning Process -**  
Aesthetic Scanning: A process of discussing the qualities of an artwork.

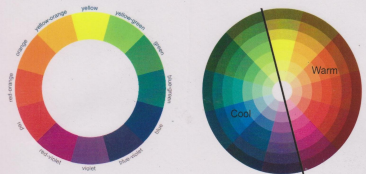
**STEP 1 - DESCRIPTION**

Describe all of the factual details of the subject matter. Don't make any guesses, only describe the facts.







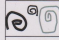
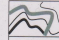
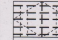
- What is the subject matter of the composition?

---

- What colors are used?



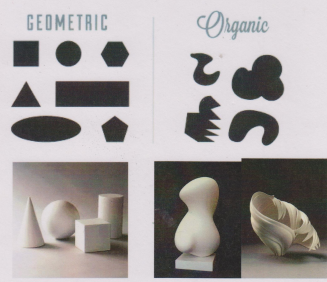
- What types of line are used? (Circle all that apply.)

 Horizontal	 Vertical	 Diagonal	 Straight	 Curved
 Zigzag	 Spiral	 Wavy	 Broken	

- What kinds of forms or shapes do you see? (Geometric or organic)

Geometric Shapes have a clear edge, and are often symmetrical.

Organic Shapes have a natural look and flowing curving appearance. They are typically irregular and asymmetrical.



## - The Aesthetic Scanning Process -

Aesthetic Scanning: A process of discussing the qualities of an artwork.

### STEP 2 - ANALYSIS

How is the work organized? Focus on the elements of art and principles of design.

- Is the painting balanced? (What type of balance? Circle one.)

Asymmetrical balance: Each side of the artwork is different, but still balanced.

Symmetrical balance: Each side of the artwork is the same or similar.

Radial balance: The elements are arranged around a central point.



- What is the focal point of the artwork?

A focal point is the element in a piece of art that pulls in the viewer's eye. It is the center of attention or the main subject.



- Are the lines or shapes repeated? (Circle one.)

YES NO

What is repeated?



- What gives the artwork a sense of unity or harmony?

(Circle all that apply.)

Harmony in art is the visually satisfying effect of combining similar, related elements. For instance: adjacent colors on the color wheel, similar shapes etc.

Repetition of:

Similar:

- Lines
- Shapes
- Forms
- Color
- Drawing or painting technique

- Lines

## - The Aesthetic Scanning Process -

Aesthetic Scanning: A process of discussing the qualities of an artwork.

### STEP 3 - INTERPRETATION

- What is the meaning from the artist's point of view?

(If you can't find meaning, answer the next question.)

- What feeling do you get from the artwork?

- What makes you feel that way? (Circle one or more.)

The subject      The technique used      The color

Examples:



Sad-color & subject

Sad-subject & technique

Happy-Color & subject

Happy-Color

## - The Aesthetic Scanning Process -

Aesthetic Scanning: A process of discussing the qualities of an artwork.

### STEP 4 - JUDGMENT

What is your opinion of the artwork? Support your critique with reasoning.

- What is your personal judgment of the painting? (Focus on the positive.)

- WHY? (Circle at least 3 reasons why you like the artwork.)

Craftsmanship: The quality of work a person does.

Technique: The method of working with art materials to produce an art object.

Composition: The plan, placement or arrangement of the elements of art in a work.

The Elements of Art:

(Circle the Elements that were used well in the artwork.)

Line      Shape      Form      Color      Value      Texture      Space

Example:

- The use of different types of lines makes the artwork very interesting.

- The values added to the drawing make it look very realistic.

- The painting gives the illusion of space by layering objects, and making them look smaller as they go up page.

Color Scheme: A set of colors that are used in an artwork. In devising a palette, artists might use color harmonies. Examples include:

- Monochromatic: Consisting of only a single color or hue that can vary in value and intensity.
- Analogous: Colors next to each other on the color wheel.
- Warm colors: Reds, oranges, and yellows
- Cool colors: Greens, blues, and violets
- Complementary: Colors across from each other on the color wheel.
- Split complementary: One color plus the two colors that are on either side of its complement on the color wheel.
- Triadic: Three colors equally spaced on the color wheel.

Other examples:

- Bright colors
- Dark colors
- Neutral colors

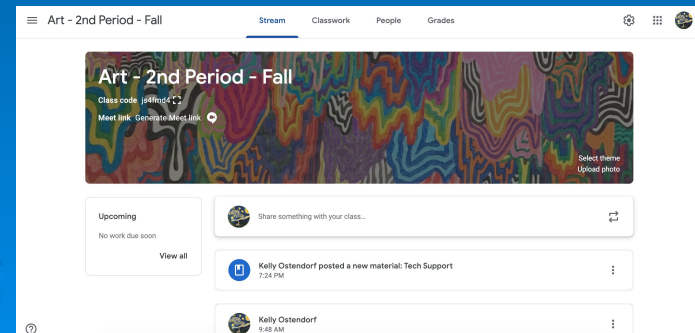


Creativity & Originality: The quality of being original or unique. The use of imagination. Any work considered to be an authentic example of the works of an artist, rather than a reproduction or imitation.

\*This only applies to art that is not a reproduction!

# GOOGLE CLASSROOM

- Google Classroom is how students will access class assignments, view materials, and turn in work. All large assignments will be posted and collected on Google Classroom. (Small worksheets will go straight into Aeries.)
- Students will take photos of their work, crop their photos, and attach them to each assignment.
- After the posted due date, assignments will be graded and the grade will be added to Aeries.
- [Google Classroom](#)



# GOOGLE CLASSROOM

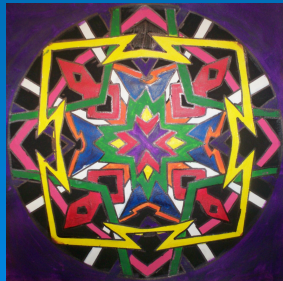
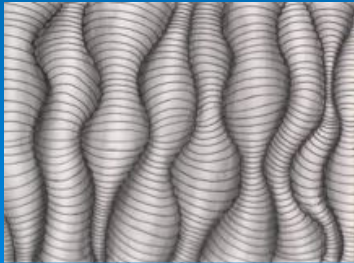
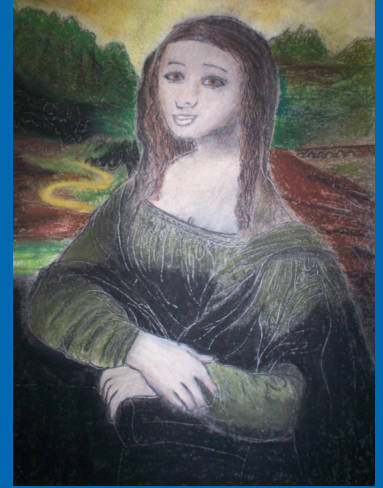
- The Google Classroom parent summary will give you a snapshot of your child's work. If you are looking for all assignments, materials, due dates, and what your child has turned in, have your child log in to their Google Classroom.
- Looking at your child's account will give you access to all of the site's resources and information.

The screenshot displays the Google Classroom interface with the following sections:

- Stream** (selected), **Classwork**, **People**, **Grades**
- All topics**
- Classwork**
  - Zoom Meetings
    - Graffiti Name - Final Drawing (Due Tomorrow, 5:00 PM)
    - Graffiti Name Practice Sheet (Due Tomorrow, 5:00 PM)
  - Exploration & ...
    - Exploration Station Slides (Posted Sep 1)
    - Graffiti Lettering - Practice (start... (Due Aug 28, 5:00 PM)
    - All About Me (8/14 & 8/15) (Due Aug 24, 5:00 PM)
- Zoom Meetings**
  - Art Class Zoom Meetings (Posted Aug 10)
  - Zoom Meeting General Info and T... (Posted Aug 10)
- Exploration & Relaxation**
  - Exploration Station Slides (Posted 5:42 PM)
  - Exploration Station (Posted Aug 7)
  - Virtual Art Museum Tours (Edited Aug 11)
  - Relaxation Station (Edited Aug 11)
- Class Materials**
  - Art Class Website (Posted Aug 11)
  - How to Take a Photo of Your Work (Edited 12:29 PM)
  - Syllabus Slides '20-'21 (Posted Aug 11)
  - Agendas (Edited Aug 11)

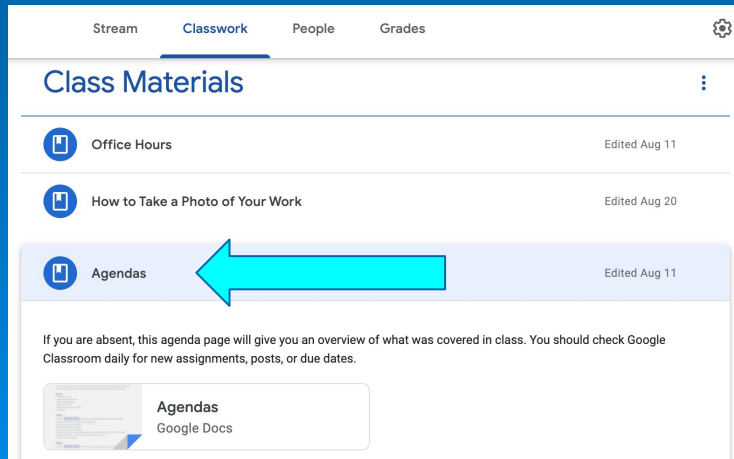
# AERIES

- Aeries is where you can access your contact information, student transcripts, graded work, and daily participation points. Aeries will only be updated after a due date and once all of the students' assignments have been graded.
- Google Classroom is where you should look for current assignments, due dates, and grades.

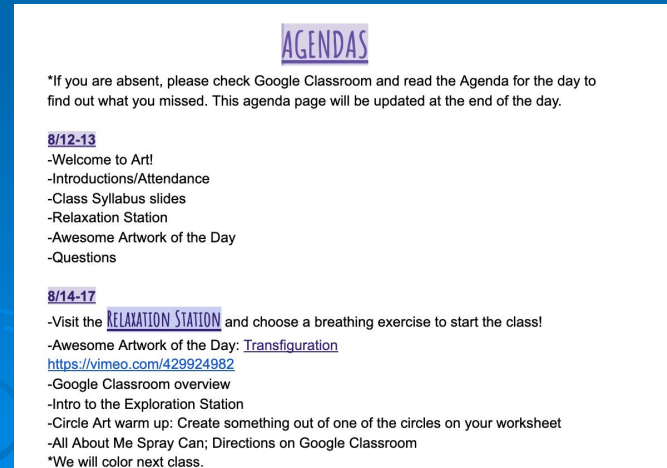


# ABSENCES & MAKE-UP WORK

- If a student is absent, then they should look in Google Classroom under the **Agendas** tab for the assignments of the day. They should also check for any new posts.
- If a student is out sick, then you need to notify the front office and adhere to the Covid safety protocols and testing procedures.



The screenshot shows the Google Classroom interface with the 'Classwork' tab selected. Under 'Class Materials', there are three items: 'Office Hours' (Edited Aug 11), 'How to Take a Photo of Your Work' (Edited Aug 20), and 'Agendas' (Edited Aug 11). A red arrow points to the 'Agendas' item. Below the list, there is a text block: 'If you are absent, this agenda page will give you an overview of what was covered in class. You should check Google Classroom daily for new assignments, posts, or due dates.' At the bottom, there is a preview card for 'Agendas' with the text 'Google Docs'.



**AGENDAS**

\*If you are absent, please check Google Classroom and read the Agenda for the day to find out what you missed. This agenda page will be updated at the end of the day.

**8/12-13**

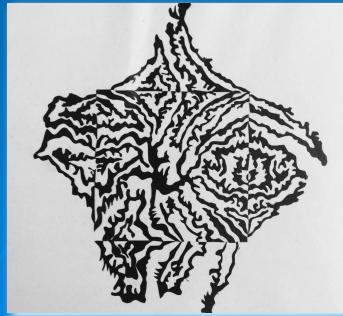
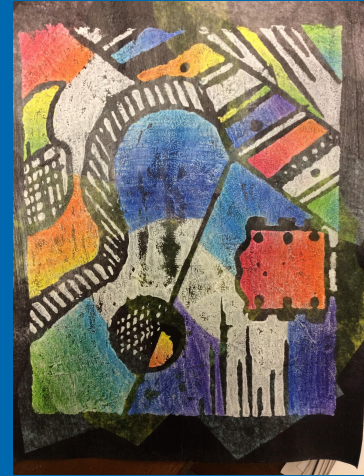
- Welcome to Art!
- Introductions/Attendance
- Class Syllabus slides
- Relaxation Station
- Awesome Artwork of the Day
- Questions

**8/14-17**

- Visit the **RELAXATION STATION** and choose a breathing exercise to start the class!
- Awesome Artwork of the Day: **Transfiguration**  
<https://vimeo.com/429924982>
- Google Classroom overview
- Intro to the Exploration Station
- Circle Art warm up: Create something out of one of the circles on your worksheet
- All About Me Spray Can; Directions on Google Classroom
- \*We will color next class.

# MAKE-UP WORK

- Students are responsible for turning in their work by taking a photo, cropping it, and submitting it on Google Classroom. Paper worksheets that are not in Google Classroom should be turned in when back from an absence.
- I usually make an assignment due a day or two after it is finished in class, so that students have extra time to complete their work.
- Late work will drop one letter grade if it is late, and it will continue to drop a letter grade each week after it was due.





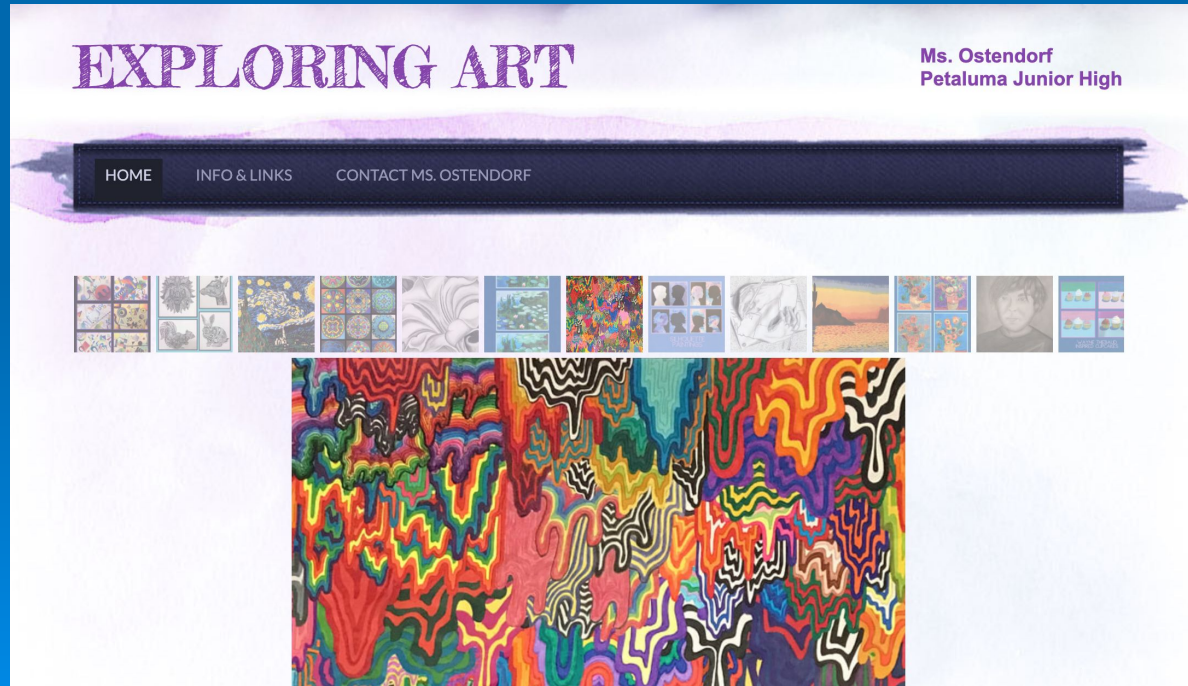
If your child ever says that they are bored, tell them to go to Ms. O's Exploration Station in Google Classroom!



# ART WEBSITE

<http://pjhsart.weebly.com>

The art website offers helpful links and beautiful student artwork.





**Thank you for coming to**  
**Back to School Night!**

